

The cornerstone of independent excellence

Soils Testing for the Geotechnical Community *Effective Stress Testing*

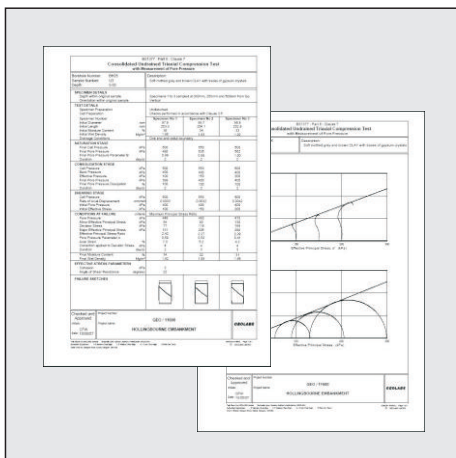
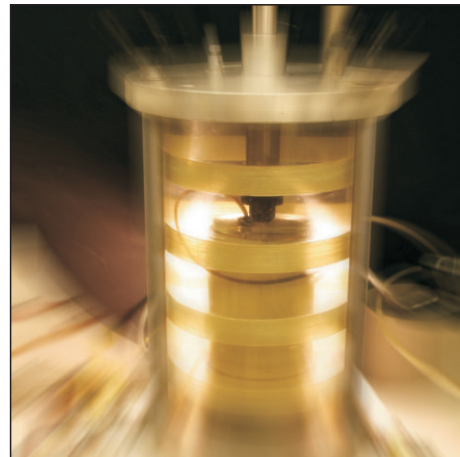


The Facility

- A temperature controlled laboratory (maintained to better than $\pm 2^{\circ}\text{C}$) using the latest electronic data acquisition for 24 hours-a-day, 365 days-a-year testing.
- Multidisciplinary staff experienced in all aspects of soil and rock testing.
- Rapid processing of raw test data using our own in-house developed software to generate reports in printed, PDF and AGS formats.

The Analysis

- Anisotropically and isotropically consolidated **undrained** triaxial compression testing, single or multistage.
- Anisotropically and isotropically consolidated **drained** triaxial compression testing, single or multistage.
- Capable of testing a wide range of sample sizes (from 38 mm to 150 mm) and sample types (U100's, Shelby, MOSTAP, piston, Delft, windowless etc.) as well as lathing down from intact block samples.
- Facilities for high pressure testing using cell pressures in excess of 1700 KPa.



The Benefits

- Independent testing facility exclusively devoted to commercial and research geotechnical laboratory testing.
- An all-round service of the highest standard backed by a fully documented quality management system.
- High quality testing and results presentation, both of which can be tailored to your requirements.
- UKAS Accredited for both consolidated drained and undrained tests, in single stage and multistage test types, as well as a wide range of other specialist and routine tests.

GEOLABS Limited
Bucknalls Lane
Garston
Watford
Hertfordshire
WD25 9XX
United Kingdom

Tel: +44 (0)1923 892 190 Fax: +44 (0)1923 892 191 email: admin@geolabs.co.uk

visit our website for prices and useful information:

www.geolabs.co.uk



1982