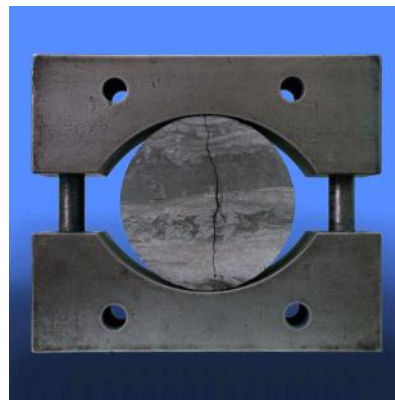




- Unconfined Compressive Strength (UCS)
- Young's Modulus,  $E$ , and Poisson's Ratio,  $\nu$
- Stress-controlled or strain-controlled loading for compression tests
- Hoek Triaxial up to 70 MPa confining pressure
- Hoek Triaxial can have  $E$  and  $\nu$  determinations
- Sophisticated preparation techniques to allow testing at any orientation in relation to foliation/drilling angle
- Rock Shear Box (Direct Shear)
- Indirect Tensile Strength by Brazilian Disc method

- Rock permeability
- Rock swelling pressure
- Swelling Strain Index
- Cherchar Abrasivity
- Slake Durability Index
- Point Load Test (PLT)
- Thermal Conductivity
- Specific Heat Capacity
- Electrical Resistivity/Conductivity



- Petrography - analysis of rocks in thin section
- Thin section preparation
- Petrographic optical microscopy analyses
- Grain shape, sphericity and angularity determination
- Schmidt Hammer
- Shore Scleroscope

